

# Tube Holders / Support Arms

## Anesthetic Tube Holders with flexible rod

adjustable in height, length of support arm: 38 cm

### with universal rail clamp and

	REF
universal tube holder plate	73-512-04
swivelling universal tube holder plate	73-512-14
universal tube holder plate with safety lock	73-512-44
pediatric tube holder plate	73-512-03

### with universal clamp and

	REF
universal tube holder plate	73-532-04
swivelling universal tube holder plate	73-532-14
universal tube holder plate with safety lock	73-532-44
pediatric tube holder plate	73-532-03
tube arrangement plate	73-532-57

### with rail clamp with quick lock and

	REF
universal tube holder plate	73-542-04
swivelling universal tube holder plate	73-542-14
universal tube holder plate with safety lock	73-542-44
pediatric tube holder plate	73-542-03



## Anesthetic Tube Holders with one joint and flexible rod

adjustable in height, length of support arm: 45 cm

### with universal rail clamp and

	REF
universal tube holder plate	74-412-04
swivelling universal tube holder plate	74-412-14
universal tube holder plate with safety lock	74-412-44
pediatric tube holder plate	74-412-03

### with universal clamp and

	REF
universal tube holder plate	74-432-04
swivelling universal tube holder plate	74-432-14
universal tube holder plate with safety lock	74-432-44
pediatric tube holder plate	74-432-03

### with rail clamp with quick lock and

	REF
universal tube holder plate	74-442-04
swivelling universal tube holder plate	74-442-14
universal tube holder plate with safety lock	74-442-44
pediatric tube holder plate	74-442-03



## Support Arms with three joints

- fixation of the three joints with one knob
- easy and quick handling
- solid and long lasting quality
- adjustable in any desired position

### Anesthetic Tube Holders with three joints and universal clamp

Length: 30 cm

- with universal tube holder plate
- with universal tube holder plate with safety lock

REF

70-131-04

70-131-44

Length: 50 cm

- with universal tube holder plate
- with universal tube holder plate with safety lock

REF

70-231-04

70-231-44



REF 70-131-04

### Pressure Transducer Holders with three joints and universal clamp

Length: 30 cm

- with clamping piece for transducer plates
- with pressure transducer and stop-cock holder

REF

70-131-07

70-131-12

Length: 50 cm

- with clamping piece for transducer plates
- with pressure transducer and stop-cock holder

REF

70-231-07

70-231-12



REF 70-131-07

### Endoscope Holders with three joints and universal clamp adjustable in height

Length: 50 cm

- for rigid endoscopes
- for flexible endoscopes

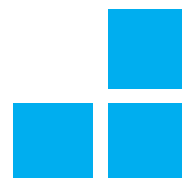
REF

70-251-06

70-251-66



REF 70-251-06



# Tube Holders / Support Arms

## Respiration Support Arms with three joints, swinging head and universal clamp

Length: 100 cm

with single tube holder

with twin tube holder

with small tube holder with safety lock

REF

70-353-01

70-353-02

70-353-33

Length: 120 cm

with single tube holder

with twin tube holder

with small tube holder with safety lock

REF

70-653-01

70-653-02

70-653-33



## Support Arms with three joints, separate



Length: 30 cm    REF 70-100-00

Length: 50 cm    REF 70-200-00

Length: 100 cm    REF 70-300-00

Length: 120 cm    REF 70-600-00

# Fixation Clamps

**Universal clamp 30 x 50 mm**  
with M8 internal thread

REF 79-030-00

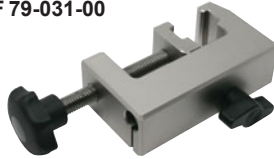


**Universal clamp 30 x 50 mm**  
with 11 mm hole for support arms adjustable in height

REF 79-039-00

with 8 mm hole for Rüscher Support Arm „Ulmer Fixator“

REF 79-031-00



**Universal clamp 50 x 50 mm**  
with Allen screw M8x80

REF 79-050-00



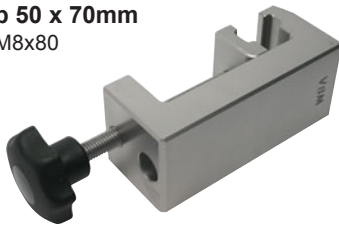
**Universal clamp 50 x 50 mm**  
with 16 mm hole for support arms adjustable in height

REF 79-059-00



**Universal clamp 50 x 70 mm**  
with Allen screw M8x80

REF 79-070-00



**Universal rail clamp 25 x 10 mm**  
with M8 internal thread

REF 79-020-00



**Universal rail clamp 25 x 10 mm**  
with 11 mm hole for support arms adjustable in height

REF 79-010-00

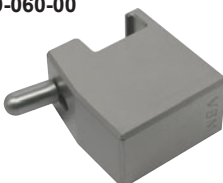
with 8 mm hole for Rüscher Support Arm „Ulmer Fixator“

REF 79-011-00



**Rail clamp with quick lock for standard rail 25 x 10 mm**  
with M8 internal thread

REF 79-060-00



**Rail clamp with quick lock for standard rail 25 x 10 mm**  
with 11 mm hole for support arms adjustable in height

REF 79-040-00

with 8 mm hole for Rüscher Support Arm „Ulmer Fixator“

REF 79-041-00



**Draeger rail clamp 25 x 10 mm**  
with M8 internal thread

REF 79-090-00



**Bennett Adapter swivelling,**  
with M10 internal thread

REF 79-099-00



**Bennett rail clamp**  
with M10 internal thread

REF 79-058-00

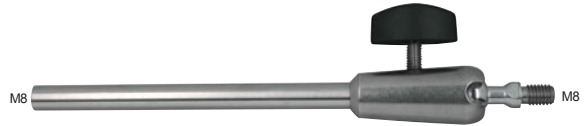


# Attachment Devices

## Flexible intermediate pieces



Flexible rod, length: 13 cm **REF 79-002-00**

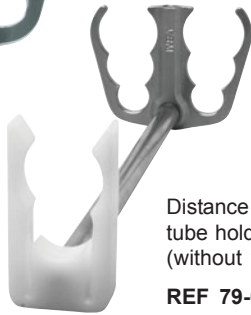


Swinging head, length: 20 cm **REF 79-003-00**

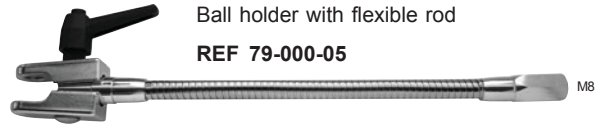
## Attachment devices for respiration tubings



Twin tube holder  
**REF 79-000-02**



Distance holder, fits to twin tube holder (without twin tube holder)  
**REF 79-000-20**



Ball holder with flexible rod  
**REF 79-000-05**



Twin tube holder with ball, fits to Draeger holder  
**REF 79-000-22**



Twin tube holder with ball, made of plastic  
**REF 79-000-21**



Universal tube holder plate  
**REF 79-000-04**



Universal tube holder plate with safety lock  
**REF 79-000-44**



Pediatric tube holder plate  
**REF 79-000-03**



Small tube holder plate with safety lock  
**REF 79-000-33**



Universal tube holder plate with one larger opening for co-axial systems  
**REF 79-000-04S2**



Universal tube holder plate, swivelling  
**REF 79-000-14**



Single tube holder for tubings 28-32 mm  
**REF 79-000-01**

Single tube holder for tubings 25-29 mm  
**REF 79-000-11**



Universal rail clamp with tube holder plate for suction tubings  
**REF 79-020-00S2**



Endoscope holder  
for rigid Endoscopes  
**REF 79-000-06**



Endoscope holder  
for flexible Endoscopes  
**REF 79-000-66**



Clamping piece  
for transducer plate  
**REF 79-000-07**



Tube clip, for support arms  
with Ø 10 mm and 12 mm  
**REF 79-000-50** Box 5

## Holders for pressure transducer plates and stop-cocks

autoclavable up to 134°C



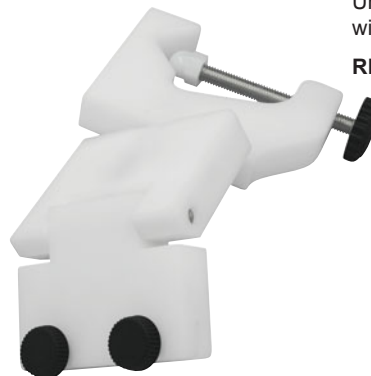
Stop-cock holder  
**REF 78-10-000**



Standard holder  
**REF 78-20-000**



Universal holder  
with one flexible joint  
**REF 78-30-000**



Universal holder  
with two flexible joints  
**REF 78-40-000**

## Pressure transducer plates to connect to the above mentioned holders

autoclavable up to 134°C



for 2 pressure transducers  
**REF 79-000-52**



for 4 pressure transducers  
**REF 79-000-54**

for 2 Braun pressure transducers  
**REF 79-000-72**

for 4 Braun pressure transducers  
**REF 79-000-74**



for 3 pressure transducers  
**REF 79-000-53**

for 3 Braun pressure transducers  
**REF 79-000-73**

**Tube arrangement plate**  
for 26 tubings of different diameters and to connect to the Holder for  
pressure transducer plates and stop-cocks

**REF 79-000-55**

