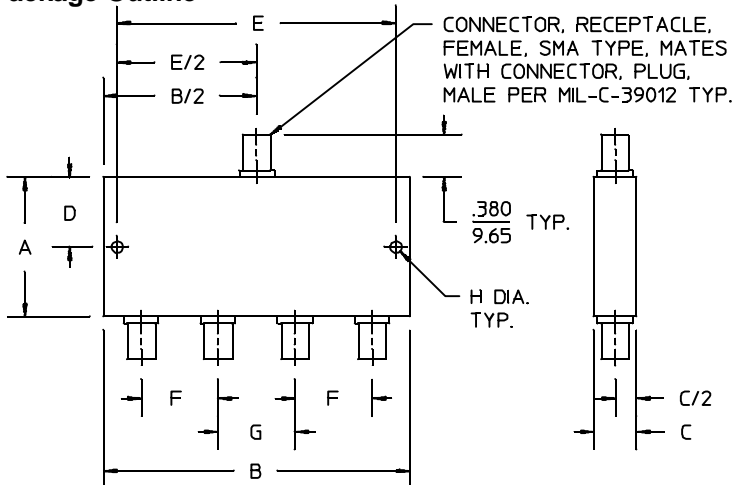


PRINCIPAL SPECIFICATIONS

Model Number	Freq. Range, GHz	Isolation, dB, Min.	Insertion Loss, dB, Max.	Phase Bal., Max.	Amplitude Balance, dB, Max.	VSWR, Max.		CW Input Power, Max., with VSWR _{out}			Outline Dwg Ref.
						In	Out	1.2:1	2.0:1	∞	
PDM-41M-.75G	0.5 - 1.0	18	0.60	6°	0.6	1.50:1	1.50:1	30W	10W	1W	1
PDM-41M-1.5G	1.0 - 2.0	20	0.60	5°	0.3	1.60:1	1.35:1	30W	10W	1W	2
PDM-41M-3G	2.0 - 4.0	18	0.60	6°	0.6	1.50:1	1.50:1	30W	10W	1W	3
PDM-41M-4G	3.0 - 5.0	20	0.50	4°	0.3	1.45:1	1.30:1	30W	10W	1W	4
PDM-41M-6G	4.0 - 8.0	20	0.40	4°	0.3	1.40:1	1.25:1	30W	10W	1W	5
PDM-41M-10G	8.0 - 12.4	16	1.00	6°	0.6	1.50:1	1.50:1	30W	10W	1W	6
PDM-41M-15G	12.0 - 18.0	18	1.50	6°	0.6	1.50:1	1.50:1	30W	10W	1W	5

Package Outline



OUTLINE	A	B	C	D	E	F	G	H	WT	OZ. (G)
1	3.400 86.36	3.600 91.44	.500 12.70	1.700 43.18	3.400 86.36	1.000 25.40	1.000 25.40	.104 2.64	11.29	(320)
2	2.500 63.50	2.750 69.85	.380 9.65	1.250 31.75	2.500 63.50	.690 17.53	.690 17.53	.104 2.64	4.23	(120)
3	2.200 55.88	2.650 67.31	.500 12.70	1.100 27.94	2.450 62.23	.650 16.51	.650 16.51	.104 2.64	4.94	(140)
4	1.780 45.21	2.750 69.85	.500 12.70	.890 22.61	2.060 52.32	.690 17.53	.690 17.53	.104 2.64	4.09	(116)
5	2.000 50.80	2.000 50.80	.380 9.65	1.000 25.40	1.700 43.18	.500 12.70	.500 12.70	.104 2.64	2.65	(75)
6	1.280 32.51	2.750 69.85	.500 12.70	.640 16.26	2.060 52.32	.690 17.53	.690 17.53	.104 2.64	3.03	(86)

GENERAL SPECIFICATIONS

Impedance: 50 Ω nom.
Operating Temperature: -55° to +85°C

General Notes:

1. The PDM-41M series of 4-way Power Dividers/Combiners covers 500 MHz to 18 GHz.
2. Each unit uses a multi-section Wilkinson circuit providing high isolation and low VSWR. Etched PTFE fiberglass stripline circuits are encased in a miniature machined housing that minimizes moding and provides an effective RF shield.
3. These units are generally available from catalog stock for fast delivery.

19Feb96